



GAT MONTHLY MEMBERSHIP PROGRESS REPORT

Results as of: 8/31/2023

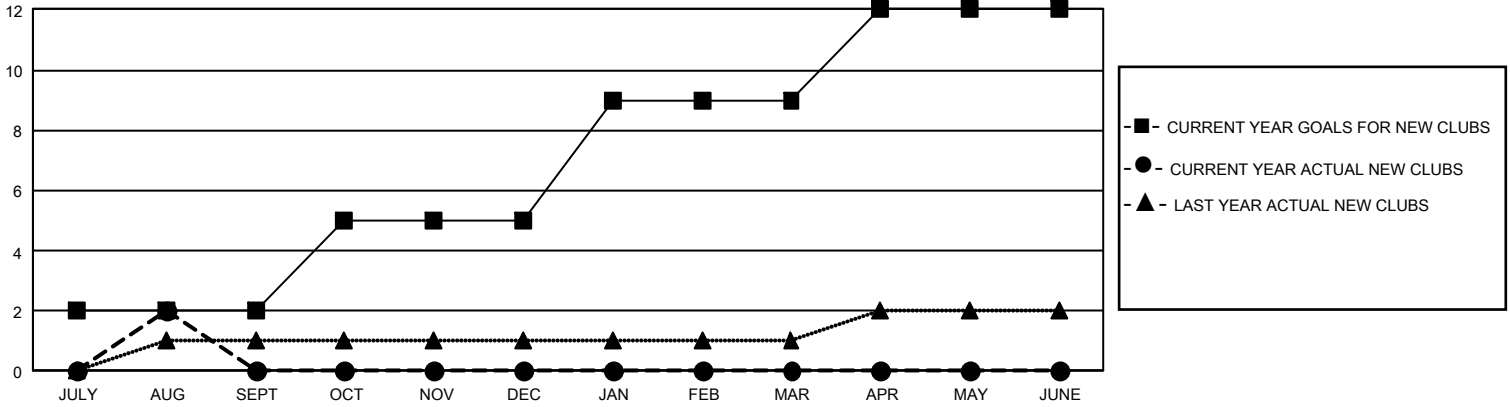
GMT Constitutional Area 4, Group D

REPORT DOES NOT INCLUDE CLUBS IN UNDISTRICTED AREAS.

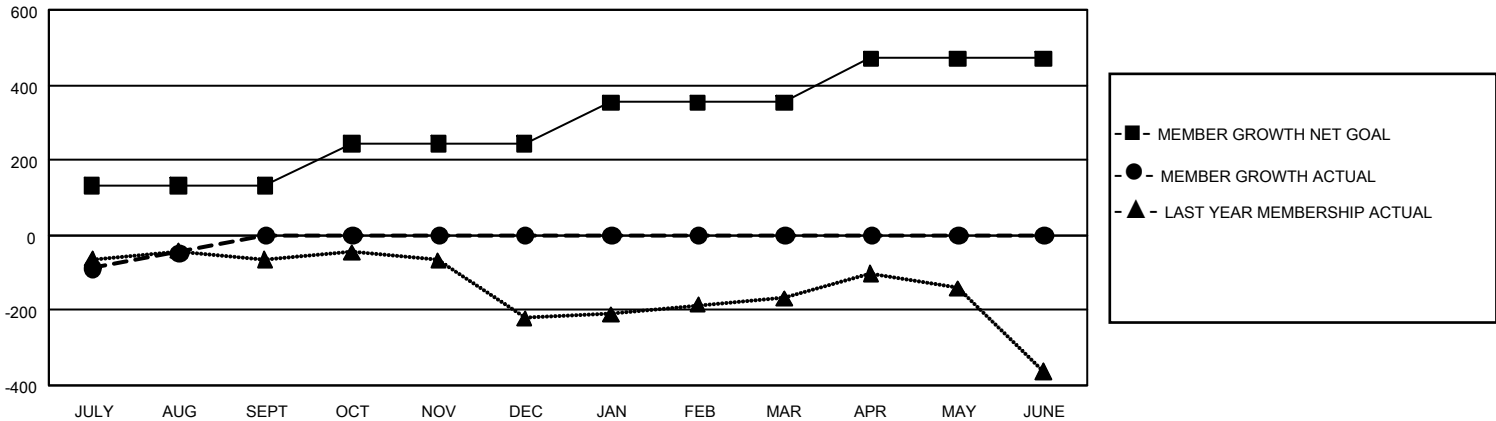
Clubs			
RESULTS FOR 2023-2024			
QUARTER	NEW CLUB GOAL	NEW CLUBS	DROPPED CLUBS
JULY/AUG/SEPT	6	2	4
OCT/NOV/DEC	9	0	0
JAN/FEB/MAR	12	0	0
APR/MAY/JUNE	9	0	0

Members			
RESULTS FOR 2023-2024			
QUARTER	MEMBER GROWTH NET GOAL	MEMBER GROWTH ACTUAL	DROPPED MEMBERS ACTUAL (including transfers)
JULY/AUG/SEPT	132	113	148
OCT/NOV/DEC	112	0	0
JAN/FEB/MAR	109	0	0
APR/MAY/JUNE	117	0	0

GOALS AND ACTUAL NEW CLUBS CUMULATIVE



GOALS AND ACTUAL MEMBERS CUMULATIVE



DROPPED CLUBS: 4	26 CLUBS OF 263 ADDED 1 OR MORE NEW MEMBERS	GENDER DISTRIBUTION	
		MALE 2,073 (39.49%) FEMALE 3,174 (60.47%) NON BINARY 0 (0.00%) PREFER NOT TO ANSWER 2 (0.04%)	
DROPPED MEMBERS		TOTAL FAMILY UNIT MEMBERS 893	
DECEASED 7 CLUB CANCELLED 45 OTHER 96 TOTAL 148	CLICK HERE FOR CUMULATIVE MEMBERSHIP DATA	FAMILY MEMBERS PAYING HALF DUES 476	